

FAST-TRACK YOUR INTERNATIONAL PATENT APPLICATION

– Use the Patent Prosecution Highway (PPH)

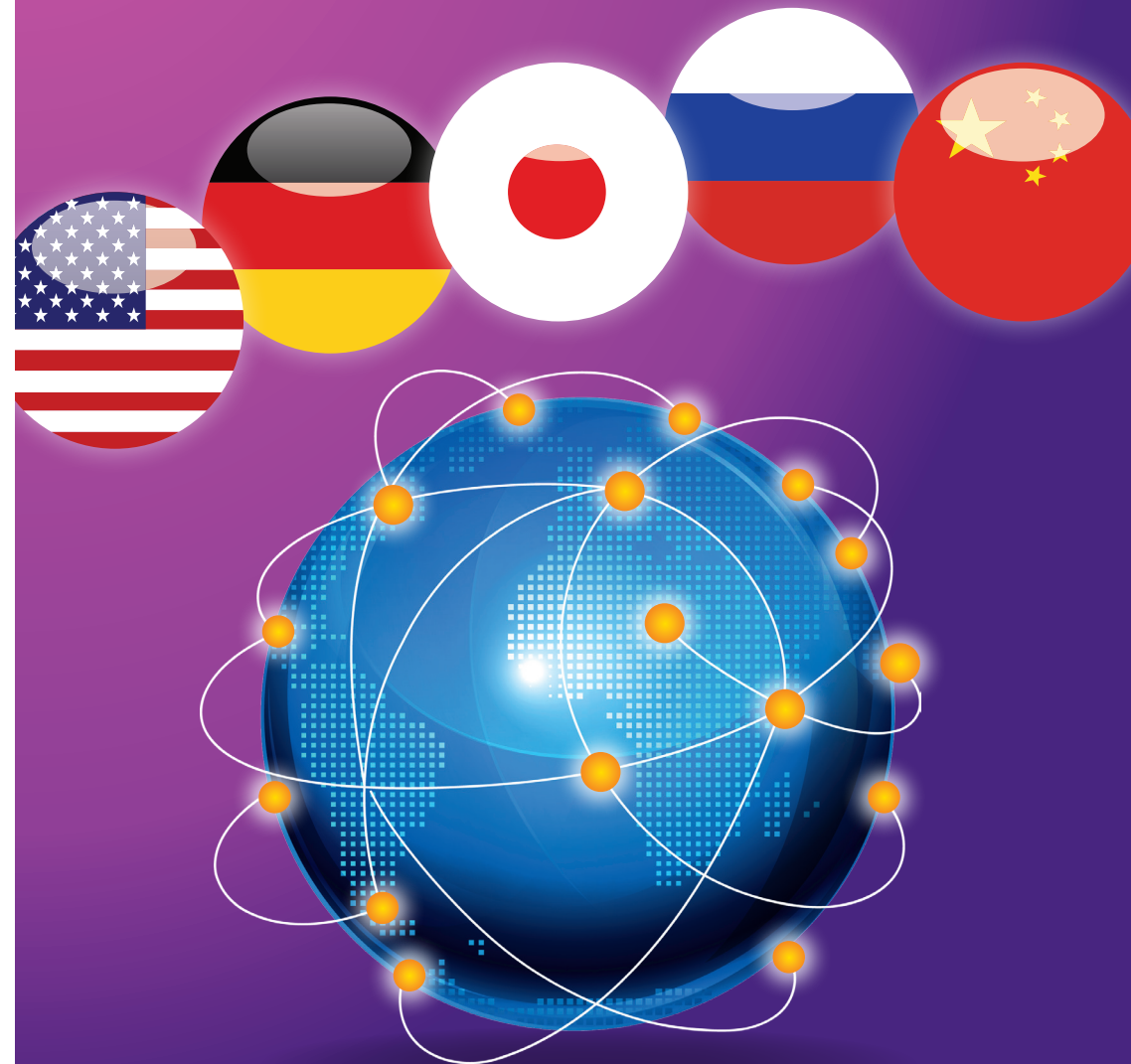
Use our services:

www.prh.fi

*Information easily accessible online.
Here and now.*

PRH FINNISH PATENT AND REGISTRATION OFFICE
We help you succeed.

Sörnäisten rantatie 13 C, Helsinki
Mailing address: 00091 PRH
Tel: 029 509 5000



WHAT IS THE PPH SYSTEM? WHY WAS IT CREATED?

Today, patent applicants have a growing need to acquire patent protection for the same invention in a number of different countries. This may require separate patent applications to be filed in many different patent offices, each considering the patent application independently of each other. This results in duplicated work and takes time.

The Patent Prosecution Highway (PPH) was developed to speed up this process.



HOW DOES THE PPH SYSTEM WORK?

The Finnish Patent and Registration Office (PRH) has PPH agreements with many national patent offices. The PPH provides applicants with fast-track patent examination procedures to obtain corresponding patents faster, more efficiently and cost-effectively.

You can request accelerated processing of your patent application at the other PPH office if the claims in the corresponding application filed with that office have already been determined to be patentable by the PRH.

PPH will also permit each office to make use of the work previously done by the other PPH office and thus reduces duplicated work.

Please note that the other offices are not compelled to accept the opinion of the PRH because the offices are always solely responsible for their own decisions.

REASONS TO REQUEST PPH FOR YOUR APPLICATION

1 You will get valid patent protection faster and more cost-effectively.

In the USA, the first action allowance rate is higher with PPH applications than with non-PPH applications and the average pendency to the final decision of applications with PPH request has been about one year when the time with normal applications has been 2.5 years.

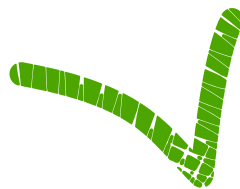
2 You can choose specific countries.

If you know that you need your patent in force in only a few countries, PPH is most likely the fastest and cheapest procedure to apply for a patent abroad.

3 More likely for patent to be granted.

It's very likely that a patent for which a PPH request was filed will be granted in the other office. Therefore, PPH offers an applicant a higher chance the examination result in the second office will be successful compared with a non-PPH application.

4 Higher quality. For a PPH application, an examiner from the second office can start an examination for an invention with all of the search/examination-related information of the first office available, and hence, the resulting quality of the patent issued can be expected to be higher.



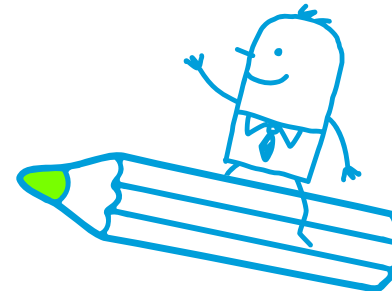
HOW DOES THE PPH SYSTEM WORK?

A REQUIRED DOCUMENTS

1. **A positive opinion from the first examining office.** If your first office is PRH, you can use Communication of Acceptance or a positive Office Action as the basis for the request. Of course, a granted patent is also approved.
2. **A corresponding application in the other office.** In general, the claims of the two applications must be the same or corresponding.

In addition, you need to provide the receiving office with

- a. **A filled-in PPH request form.** You can find the necessary forms from the webpage of the receiving office or from the PPH portal.
- b. **A claim-correspondence table.**
- c. **Possible attachments.** Usually, you need to provide the PPH request receiving office with the accepted claims, the positive office action, translated documents where required, and copies of the cited reference. If you base your request on the PRH's examination and the Finnish application is published, you can request that the other office collects these documents from the PRH database PatInfo.



B LANGUAGE

In most cases, the request can be filed in English. Of course, you can also file it in the national language of the receiving office.

If you have filed your Finnish application in English, you don't have to provide the other office with translations, because all the required documents are already in English.

Please note that the PPH offices have slightly different rules on things like when the PPH request can be filed. For instance, the USPTO (USA), JPO (Japan), UKIPO (UK), DPMA (Germany) and ROSPATENT (Russia) require that the examination for the application in question has not yet begun, whereas SIPO (China) requires that the application must have entered into substantive examination.

Check the requirements for acceptable timing of PPH request, acceptable application types and required attachments before you file the request since not all the offices allow corrections to the PPH request.

MORE INFORMATION

You'll find all our PPH agreements, link to PPH portal and more practical information on our webpage in English

- ➔ www.prh.fi/pphen
- ➔ You can also contact our customer service tel. 029 509 5050 or neuvonta.patentti@prh.fi